

HEMERY ROW APT.1

SOLE AGENT



1

BEDROOM

1

BATHROOM

£1,450 ST. HELIER

ENTITLED/LICENSED Livingroom is delighted to introduce this spacious ground-floor apartment with a large private terrace within the sort after Hemery Row development. Discreetly tucked away, yet within a short stroll of St. Helier, the accommodation comprises an entrance hall with a large store/utility cupboard, an open plan fully fitted kitchen/sitting room with access to a private terrace, double bedroom and bathroom finished to a high specification throughout. Available mid-May. Regrettably no pets. Please contact our Lettings Team at Livingroom Estate Agents in Jersey today on +44 1534 717100 or email: info@livingroom.je to register your interest.



LIVINGROOM
The Channel Island Estate Agent





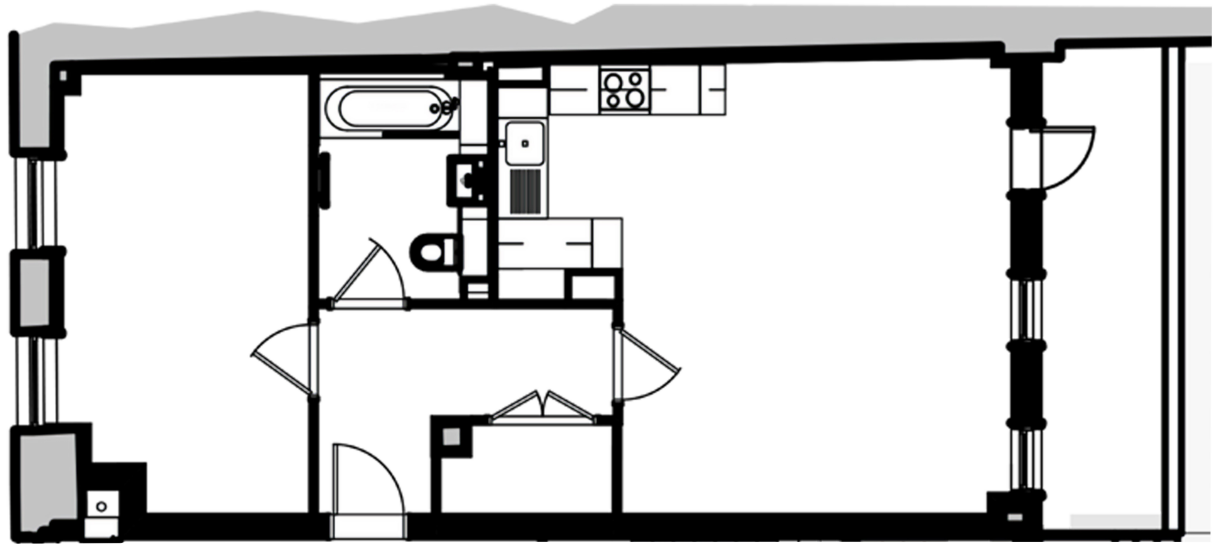












Entrance hall	11'6 x 7'10
Kitchen/sitting room	20'2 x 17'8
Utility cupboard	6'2 x 3'6
Bedroom	17'5 x 9'7
Bathroom	8'10 x 6'9
Terrace	19'9 x 6'7

KEY FACTS

Spacious ground floor apartment
Private outside terrace
Finished to a high specification
Regrettably no pets
Available mid May
ENTITLED /LICENSED

SERVICES

Mains water
Mains drainage

HEATING

Electric heating

APPLIANCES

Bosch oven, hob and extractor
Bosch dishwasher
Bosch fridge/freezer
Washer/dryer

INCLUSIONS

To include all items listed in the
inventory/condition report

SCHOOL CATCHMENT

Springfield
Grainville

These particulars are supplied on the understanding all negotiations by Livingroom are conducted through this office. We understand these particulars to be correct but we do not guarantee their accuracy nor do they form part of any contract. Any floor plans provided are for the purposes of identification only and are not of absolute delineation. Measurements and areas illustrated are approximate and should not be relied upon. Livingroom have not undertaken a detailed survey, nor tested the services, appliances and specific fittings.

£1,450



LIVINGROOM
The Channel Island Estate Agent