

# VESLET LODGE



**6**

BEDROOMS

**5**

BATHROOMS

**8,281**

SQ FT

**1.4**

ACRES

## POA ST. LAWRENCE

Veslet Lodge is a welcoming and beautifully proportioned family home - perfectly positioned in the heart of the St. Lawrence countryside. The recent restoration and refurbishment of this granite property have delivered a space of beauty and integrity both inside and out. Internally this exceptional, 8,281 sq. ft property is complete with 5 generously proportioned double-bedroom suites, numerous reception areas and a beautiful kitchen/dining area. This amazing country retreat also features a luxurious indoor pool and spa complex complete with a sauna, steam room and changing facilities. Externally, the property offers an expansive garden with an oversized pond, separate guest accommodations as well as a single and double garage. Veslet Lodge is a property that needs to be seen to be truly appreciated and is quite simply a magnificent Jersey home.



**LIVINGROOM**  
The Channel Island Estate Agent





















































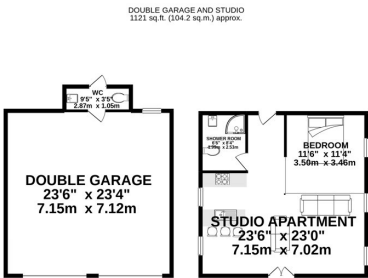
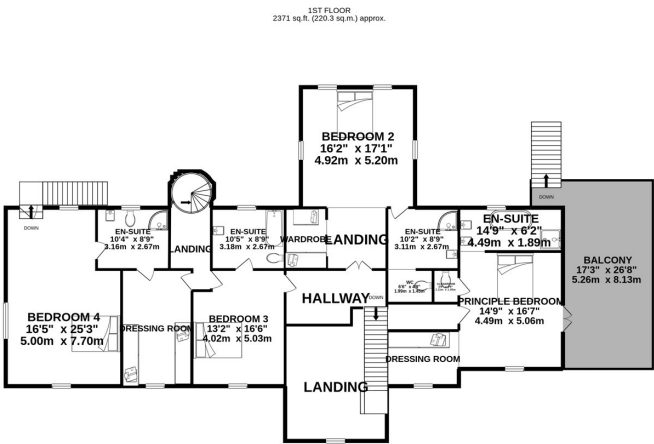
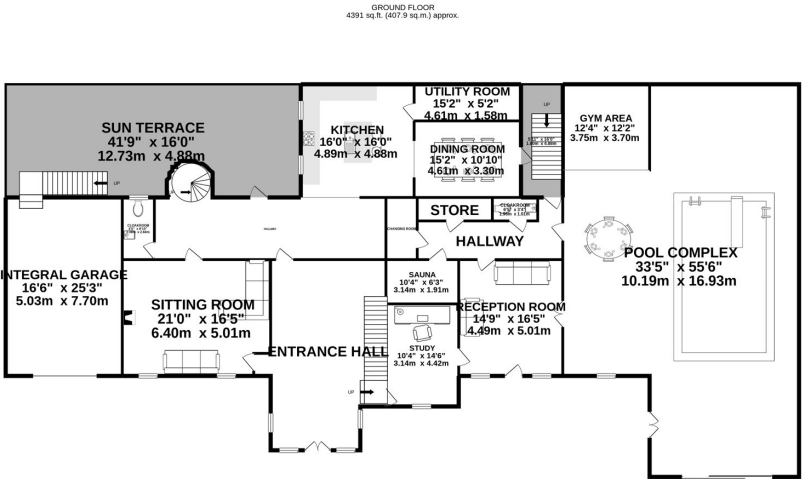












TOTAL FLOOR AREA : 8281 sq.ft. (769.4 sq.m.) approx.

Whilst every attempt has been made to ensure the accuracy of the floorplan contained here, measurements of doors, windows, rooms and any other items are approximate and no responsibility is taken for any error, omission or mis-statement. This plan is for illustrative purposes only and should be used as such by any prospective purchaser. The services, systems and appliances shown have not been tested and no guarantee as to their operability or efficiency can be given.



## MAIN HOUSE

### GROUND FLOOR

Entrance Hall	18'9 x 27'0
Sitting Room	21'0 x 16'5
Hallway	32'9 x 13'11
Sun Terrace	41'9 x 16'0
Cloakroom	4'6 x 8'10
Kitchen	16'0 x 16'0
Dining Room	15'2 x 10'10
Utility Room	15'2 x 5'2
Study	10'4 x 14'6
Reception Room	14'9 x 16'5
Pool Complex	33'5 x 55'6
Gym Area	12'4 x 12'2
Hallway	20'7 x 8'10
Cloakroom	6'5 x 3'4
Store	10'8 x 3'4
Changing Room	4'5 x 8'10
Sauna	4'5 x 8'10

### FIRST FLOOR

Landing	24'7 x 19'6
Hallway	14'5 x 7'10
Principle Bedroom	14'9 x 16'5
En-suite	14'9 x 6'2
Cloakroom	8'8 x 4'9
Balcony	17'3 x 26'8
Dressing Room	10'2 x 7'10
Bedroom 2	16'2 x 17'1
En-suite	10'2 x 8'9
Wardrobe	5'10 x 8'9
Bedroom 3	13'2 x 16'6
En-suite	10'5 x 8'9
Dressing Room	13'2 x 16'6
Bedroom 4	16'5 x 25'3
En-suite	10'4 x 8'9

### SECOND FLOOR

Bedroom 5	13'3 x 16'10
En-suite	6'9 x 11'0

## STUDIO APARTMENT & GARAGE

## STUDIO APARTMENT & GARAGE

Sitting Room / Kitchen / Diner	23'6 x 23'0
Bedroom	11'6 x 10'4
Shower Room	6'6 x 8'4
Double Garage	23'6 x 23'4
WC	9'5 x 3'5

### KEY FACTS

Welcoming and beautifully proportioned family home

Extensively renovated and extended

Positioned in the heart of the St. Lawrence countryside

Gorgeous 1.4 acre grounds

Luxurious pool and spa complex

Separate guest accommodation

Oversized pond with boat house

Garaging and ample parking

Gated access

### WATER

Borehole water with filtration system

### DRAINAGE

Mains drainage

### HEATING

Oil fired central heating

### ADDITIONAL

Electric car charge point

### INCLUSIONS

As Per Inventory

## SCHOOL CATCHMENT

St Lawrence  
Haute Vallee

These particulars are supplied on the understanding all negotiations by Livingroom are conducted through this office. We understand these particulars to be correct but we do not guarantee their accuracy nor do they form part of any contract. Any floor plans provided are for the purposes of identification only and are not of absolute delineation. Measurements and areas illustrated are approximate and should not be relied upon. Livingroom have not undertaken a detailed survey, nor tested the services, appliances and specific fittings.

## POA



**LIVINGROOM**  
The Channel Island Estate Agent