

APT. 1, EBENEZER CHURCH



1

BEDROOM

1

BATHROOM

580

SQ FT

4.8%

YIELD

£399,000 LOCAL MARKET, ST. PETER PORT

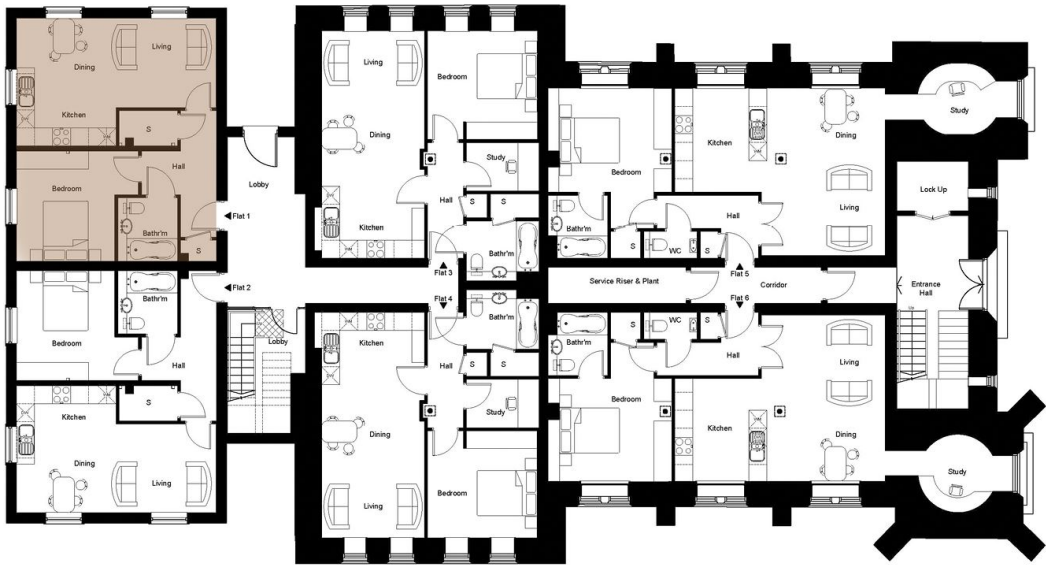
GROUND FLOOR / 580 SQ. FT / ONE BEDROOM APARTMENT. Complete and ready to view. Livingroom is proud to offer the stunning Ebenezer development to the market. Carefully crafted from the former Brock Road Methodist Church (dating back to 1878) Ebenezer breathes new life into a building of architectural importance with stunning, restored character features working in synchronicity with the very latest modern inclusions. Arranged over three floors, the 17 one and two-bedroom apartments are completely unique and designed to provide notably light and spacious living. Externally, the apartments benefit from an allocated parking space.



LIVINGROOM

The Channel Island Estate Agent





GROUND FLOOR PLAN - APARTMENT 1



GROUND FLOOR

COMMUNAL ENTRANCE

Hall

Bedroom

Bathroom

**Kitchen/sitting/dining
room**

KEY FACTS

Stunning development of 17 apartments

Architecturally important building with
stunning, restored character features

Fabulous modern specification

Notably light and spacious living

Allocated parking space

SERVICES

Mains services

DRAINAGE

Mains drainage

HEATING

Electric radiators and underfloor heating

SERVICE CHARGE

£177pcm

INCLUSIONS

To include all fitted flooring, light
fittings and appliances as listed.

These particulars are supplied on the understanding all negotiations by Livingroom are conducted through this office. We understand these particulars to be correct but we do not guarantee their accuracy nor do they form part of any contract. Any floor plans provided are for the purposes of identification only and are not of absolute delineation. Measurements and areas illustrated are approximate and should not be relied upon. Livingroom have not undertaken a detailed survey, nor tested the services, appliances and specific fittings.

£399,000



LIVINGROOM

The Channel Island Estate Agent