

WESTMOUNT ONE, PENTHOUSE A703



2

BEDROOMS

2

BATHROOMS

896

SQ FT

4.0%

YIELD

POA ST. HELIER

SHARE TRANSFER - Livingroom is delighted to offer this fabulous Penthouse two-bedroom apartment in the premier building number One to the market. Situated within the prestigious and highly desirable Westmount development and arguably benefitting from one of the best sea and castle views within the development, this stunning apartment comprises superb reception space with two bedrooms, two bathrooms, two ample store cupboards, a generous utility room and a large wrap around balcony. The epitome of modern 'easy living' throughout, this entirely lateral home has been carefully conceived with quality appliances and fixtures. This apartment also offers secure gated underground parking for two vehicles and access to the on-site gym and bike store. A haven in the heart of St. Helier. Call the sales team at Livingroom on +44 1534 717100 or email jersey@livingroomproperty.com for more information.



LIVINGROOM

The Channel Island Estate Agent











SEVENTH FLOOR

Entrance Hall	8'6 x 21'7
Kitchen/Sitting/Dining Room	19'4 x 27'3
Balcony	30'1 x 32'2
Primary Bedroom	11'10 x 10'6
En-suite	7'2 x 5'11
Bedroom Two	10'6 x 11'10
Bathroom	8'11 x 5'7
Utility Room	10'2 x 3'7

KEY FACTS

Luxury Penthouse apartment
Two bedrooms, two bathrooms
Generously sized wrap around balcony with far reaching sea views
On-site gym
Secure and dry bike store
Underground parking for two vehicles (side by side)
Ideal buy-to-let investment
Short walk to St Helier town centre and the beach
Vacant so onward chain

SERVICES

Mains drains and water

HEATING

Electric heating throughout

ADDITIONAL INFORMATION

Block managed by Assured Property Management

The quarterly charge is £1013

Block has lift access to all levels

Bike store in under ground secure car park

PARKING

Parking space for two vehicles space numbers 75 & 76

POTENTIAL RENTAL INCOME

£2800 pcm

INCLUSIONS

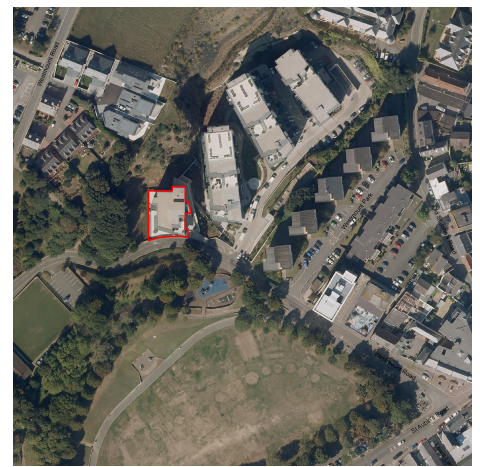
As per inventory

SCHOOL CATCHMENT

First Tower
Haute Vallee

These particulars are supplied on the understanding all negotiations by Livingroom are conducted through this office. We understand these particulars to be correct but we do not guarantee their accuracy nor do they form part of any contract. Any floor plans provided are for the purposes of identification only and are not of absolute delineation. Measurements and areas illustrated are approximate and should not be relied upon. Livingroom have not undertaken a detailed survey, nor tested the services, appliances and specific fittings.

POA



LIVINGROOM
The Channel Island Estate Agent