

W604 HORIZON



1
BEDROOM

1
BATHROOM

466
SQ FT

4.5%
YIELD

£399,000 ST. HELIER

Livingroom is delighted to offer the opportunity to purchase a sixth-floor, one-bedroom apartment within the West building of the much-coveted Horizon development. W604 comprises one bedroom and a house bathroom and an open-plan kitchen/dining area with a good sized very private balcony and exceptional views of Elizabeth Marina, the castle and beyond. Marking a major investment in the future of St. Helier's landscape, this landmark waterside development will be a vibrant and exciting new community for residents, businesses and restaurants. The stunning development comprises 280 luxury apartments - designed by Skidmore, Owings & Merrill LLP (SOM), the world's most awarded international architecture firm. The development includes one-, two- and three-bedroom apartments, all with lift access - some of which include secure parking spaces within the basement. Marking a major investment in the future of St. Helier's landscape, this landmark waterside development will be a vibrant and...



LIVINGROOM
The Channel Island Estate Agent

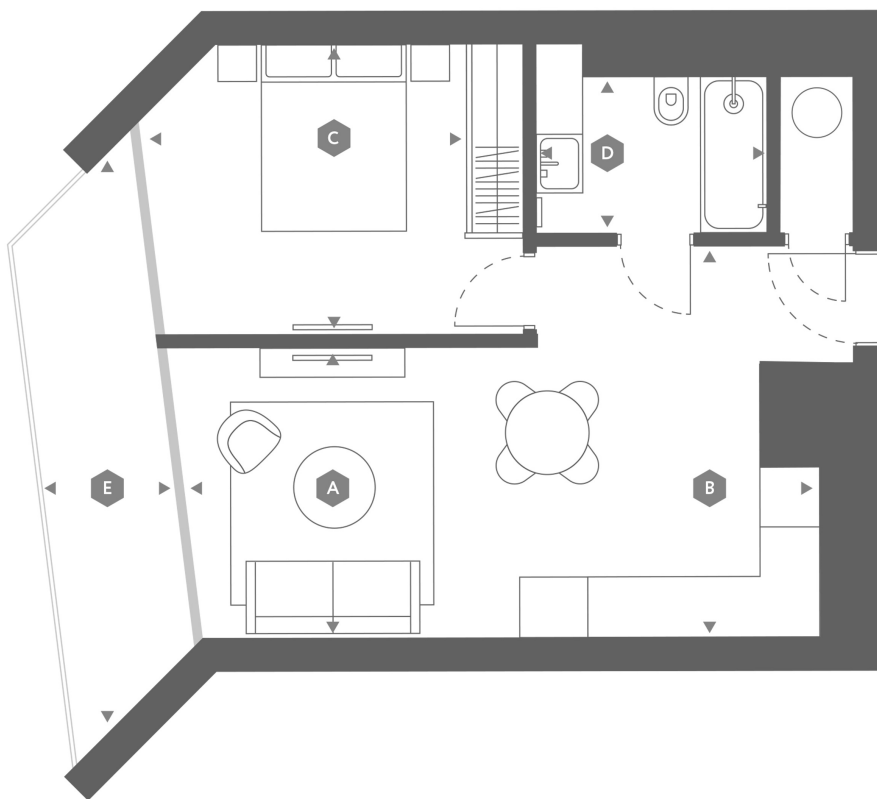












▼ Gross Internal Area

43.3 m² / 465.5 ft²

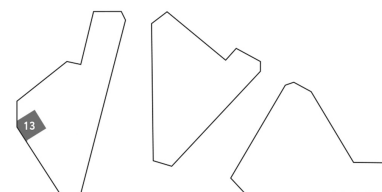
▼ External Dimensions

8.1 m² / 87.0 ft²

▼ Approximate Room Dimensions

| | |
|------------------------|----------------------|
| A - W: 6.6 m / 21.7 ft | X L: 3.0 m / 9.8 ft |
| B - W: 6.6 m / 21.7 ft | X L: 4.1 m / 13.5 ft |
| C - W: 3.3 m / 10.8 ft | X L: 3.0 m / 9.8 ft |
| D - W: 2.4 m / 7.9 ft | X L: 1.7 m / 5.6 ft |
| E - W: 1.8 m / 5.9 ft | X L: 5.4 m / 17.7 ft |

▼ Locator



13

SIXTH FLOOR

| | |
|----------------------|-------------|
| Kitchen/Diner | 21'7 x 9'8 |
| Sitting Room | 21'7 x 13'5 |
| Bedroom | 10'8 x 9'8 |
| Bathroom | 7'9 x 5'6 |
| Balcony | 5'9 x 17'7 |

KEY FACTS

Sixth floor one bed room apartment with incredible sea views
Spacious balcony accessed from living space and bedroom
Brand new never been lived in apartment
Stunning South-facing marina, castle and bay views towards Noirmont
Brand new landmark waterside development
Available immediately

SERVICES

Mains drains and water

HEATING

Electric heating throughout

SERVICE CHARGE

£667.42 per quarter

MANAGING AGENT

Maillard's & Co

ADDITIONAL INFORMATION

No parking is included with the sale of this apartment

INCLUSIONS

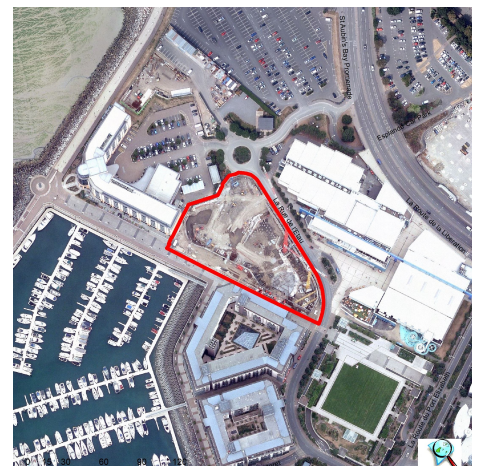
As per inventory

SCHOOL CATCHMENT

Rouge Bouillon
Haute Vallee

These particulars are supplied on the understanding all negotiations by Livingroom are conducted through this office. We understand these particulars to be correct but we do not guarantee their accuracy nor do they form part of any contract. Any floor plans provided are for the purposes of identification only and are not of absolute delineation. Measurements and areas illustrated are approximate and should not be relied upon. Livingroom have not undertaken a detailed survey, nor tested the services, appliances and specific fittings.

£399,000



LIVINGROOM
The Channel Island Estate Agent