

SUNHAVEN

SOLE AGENT



3

BEDROOMS

1

BATHROOM

1,228

SQ FT

POA LOCAL MARKET, VALE

This detached bungalow is situated in a popular residential location within walking distance to L'Ancrese Common and nearby beaches. The accommodation offers good natural light and comprises entrance hall, sitting room, three bedrooms, bathroom, separate WC and a spacious kitchen/dining room. Externally, there are front/rear lawned gardens, parking for three/four vehicles and a generous garage with an adjoining lean-to. A great opportunity for someone wanting to put their own stamp on a property, internal viewing highly recommended.

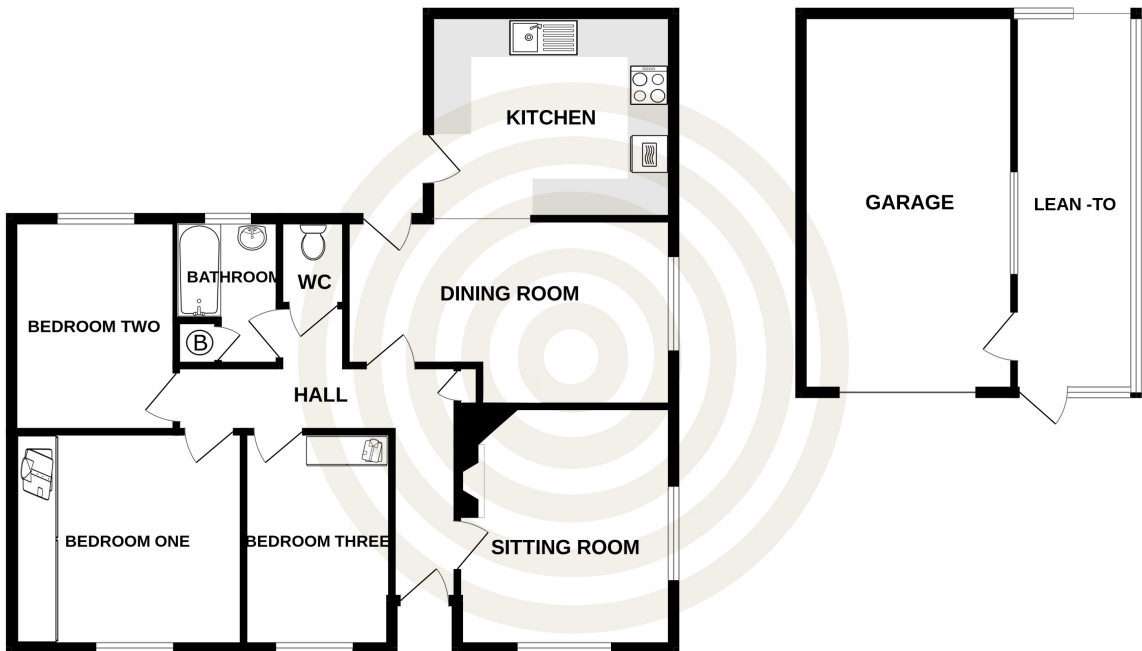


LIVINGROOM

The Channel Island Estate Agent



GROUND FLOOR
1228 sq.ft. (114.1 sq.m.) approx.



TOTAL FLOOR AREA : 1228 sq.ft. (114.1 sq.m.) approx.
Whilst every attempt has been made to ensure the accuracy of the floorplan contained here, measurements of doors, windows, rooms and any other items are approximate and no responsibility is taken for any error, omission or mis-statement. This plan is for illustrative purposes only and should be used as such by any prospective purchaser. The services, systems and appliances shown have not been tested and no guarantee as to their operability or efficiency can be given.
Made with Metropix ©2024

GROUND FLOOR

Entrance hall	15'4 x 14'7
Bedroom three	11'3 x 7'9
Bedroom one	11'3 x 12'0
Bedroom two	11'1 x 8'7
Bathroom	7'8 x 5'4
Separate WC	4'6 x 3'5
Dining room	9'9 x 17'9
Kitchen	10'8 x 12'9

GARAGE

LEAN-TO

KEY FACTS

Detached bungalow
Situating in a popular residential location
Close to L'Ancrese Common
Spacious kitchen/dining room
Generous garage and parking

SERVICES

Mains services

DRAINAGE

Mains drainage

HEATING

Oil central heating

APPLIANCES

Cooke and Lewis oven
Cooke and Lewis hob & extractor unit
Sharp microwave
Hoover dishwasher
Integrated Beko fridge and freezer
Hotpoint freezer
Electrolux freezer

INCLUSIONS

To include all carpets and fitted flooring, the curtains and blinds as hung, light fittings and appliances as listed.

These particulars are supplied on the understanding all negotiations by Livingroom are conducted through this office. We understand these particulars to be correct but we do not guarantee their accuracy nor do they form part of any contract. Any floor plans provided are for the purposes of identification only and are not of absolute delineation. Measurements and areas illustrated are approximate and should not be relied upon. Livingroom have not undertaken a detailed survey, nor tested the services, appliances and specific fittings.

POA



LIVINGROOM
The Channel Island Estate Agent