

LA CHASSE



7

BEDROOMS

5

BATHROOMS

8,505

SQ FT

1.9

ACRES

£3,995,000 ST. MARTIN

Tucked away in a coveted St. Martin location, this enchanting Jersey house is steeped in history—dating back to 1625 and celebrated in Joan Stevens’ Old Jersey Houses. Exuding captivating charm and impeccably restored, La Chasse has been finished to the highest standards—seamlessly marrying timeless elegance with contemporary amenities. Spanning an impressive 8,505 sq. ft., the main residence boasts four generously sized bedrooms, each adorned with en-suite facilities and bespoke fitted wardrobes. Expansive reception rooms, a west-facing conservatory, and a luxurious family kitchen/breakfast area offer spaces perfect for both relaxation and entertaining. Enhancing the appeal for those seeking guest/staff accommodation or a separate home office space is a gorgeous, connected one-bedroom cottage, while a spacious, semi-detached two-bedroom cottage adds further versatility.

Surrounded by a verdant, level garden and orchard, this property features garaging for over five cars and ample...



LIVINGROOM
The Channel Island Estate Agent







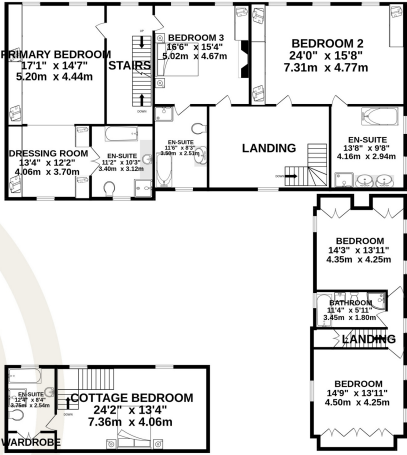
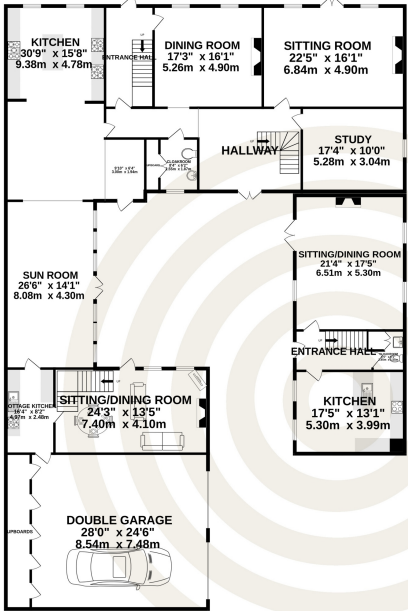
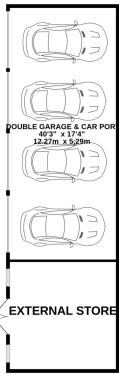




GARAGE/200
1000 sq.ft. (293 sq.m.) approx.

GROUND FLOOR
4237 sq.ft. (394 sq.m.) approx.

1ST FLOOR
2865 sq.ft. (265 sq.m.) approx.



2ND FLOOR
501 sq.ft. (465 sq.m.) approx.



TOTAL FLOOR AREA : 8505 sq.ft. (790.1 sq.m.) approx.

Whilst every attempt has been made to ensure the accuracy of the floorplan contained here, measurements of doors, windows, rooms and any other items are approximate and no responsibility is taken for any error, omission or mis-statement. This plan is for illustrative purposes only and should be used as such by any prospective purchaser. The services, systems and appliances shown have not been tested and no guarantee as to their operability or efficiency can be given.

Made with Metropix ©2024

GARAGING

Double Garage and Car Port	17'4 x 40'3
External Store	17'4 x 17'5

GROUND FLOOR MAIN HOUSE

Entrance Hall	7'8 x 16'1
Dining Room	17'3 x 16'1
Sitting Room	22'5 x 16'1
Study	17'4 x 10'0
Hallway	16'0 x 13'3
Cloakroom	6'2 x 8'4
Kitchen	15'8 x 30'9
Sun Room	

GROUND FLOOR 1 BED COTTAGE

Cottage Kitchen	8'2 x 16'4
Sitting/Dining Room	24'3 x 13'5
Double Garage	28'0 x 24'6

FIRST FLOOR MAIN HOUSE

Stairs	7'7 x 19'2
Primary Bedroom	14'7 x 17'1
Dressing Room	13'4 x 12'2
En-suite	10'3 x 11'2
Bedroom 3	15'4 x 16'6
En-suite	8'3 x 11'6
Landing	19'3 x 13'3
Bedroom 2	24'0 x 15'8
En-suite	9'8 x 13'8

FIRST FLOOR 1 BED COTTAGE

Cottage Bedroom	24'2 x 13'4
En-suite	8'4 x 12'4

SECOND FLOOR MAIN HOUSE

Landing	7'9 x 9'11
Bedroom 4	15'3 x 13'1
En-suite	15'5 x 13'2

GROUND FLOOR 2 BED COTTAGE

Entrance Hall	12'4 x 6'5
Cloakroom	5'1 x 6'5

GROUND FLOOR 2 BED COTTAGE

Sitting/Dining Room	17'5 x 21'4
Kitchen	17'5 x 13'1

FIRST FLOOR 2 BED COTTAGE

Landing	11'6 x 8'2
Bedroom	14'3 x 13'11
Bathroom	11'4 x 5'11
Bedroom	14'9 x 13'11

KEY FACTS

Semi-detached large executive home
Main house provides 4 bedrooms
Complete with 1 bed cottage and 2 bedroom cottage
Garaging for 6 vehicles and ample parking
Private gated entrance
Gardens and orchard
Available immediately

SERVICES

Mains drains and water

HEATING

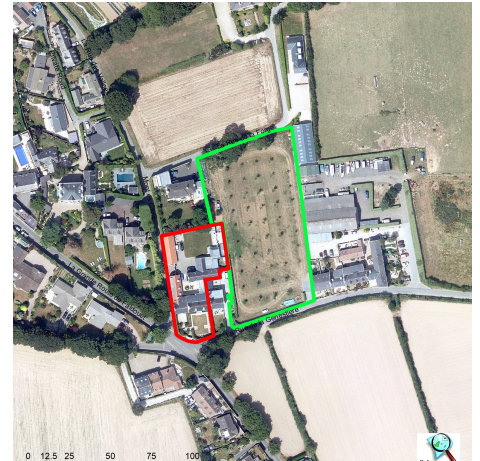
Electric heating throughout (radiators)

INCLUSIONS

As per inventory

These particulars are supplied on the understanding all negotiations by Livingroom are conducted through this office. We understand these particulars to be correct but we do not guarantee their accuracy nor do they form part of any contract. Any floor plans provided are for the purposes of identification only and are not of absolute delineation. Measurements and areas illustrated are approximate and should not be relied upon. Livingroom have not undertaken a detailed survey, nor tested the services, appliances and specific fittings.

£3,995,000



LIVINGROOM
The Channel Island Estate Agent